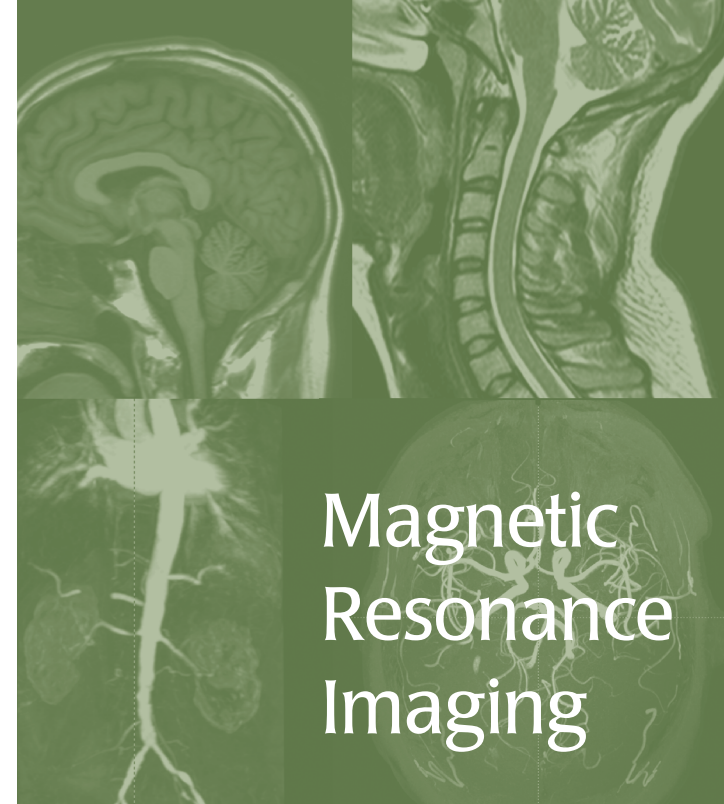


The Advanced Imaging Center at Westchester Medical Center is a one-stop, full-service facility offering the latest advanced diagnostic technology in such areas as MRI, CT Scan, Bone Density, Ultrasound, Mammography and General Radiology, including the most advanced imaging system available for clinical care, the 256-slice computed tomography (CT) scanner.

In order to maintain our high standard of care, all of our services have undergone voluntary accreditation programs from the American College of Radiology.



# Magnetic Resonance Imaging

## What is Magnetic Resonance Imaging?

Magnetic resonance imaging (MRI) is a technique that allows doctors to see inside the human body in remarkable detail without using x-rays. Instead, MRI uses a powerful magnet, radio waves and a sophisticated computer system. This scan will provide your doctor with important information on certain types of body tissue (internal organs, joints, brain and spine) differently than an x-ray or a computed tomography (CT) scan.

### Westchester Medical Center Advanced Imaging

19 Bradhurst Ave., Suite 1000, Hawthorne, NY 10532  
Phone: (914) 493-2500  
to schedule an appointment press 2  
Fax: (914) 493-2501

For more information about inpatient radiology please call (914) 493-1927

10-0016 7.10



To ensure that all patients scheduled for MRI procedures are properly prepared and knowledgeable of the exam.

## How do I prepare for my MRI scan?

Very little preparation is required for an MRI scan. Prior to the scan, you are encouraged to go to the bathroom. You will be asked to remove all metallic items such as watches, jewelry, hairpins, eyeglasses, and hearing aids. Also, do not take any credit, bank, or parking cards with you into the scan as the scanner will erase the information recorded on the metallic strip. A personal locker will be provided for safe-keeping of valuables.

## Intravenous Injections?

For some procedures, it may be necessary to inject a special contrast material (Gadolinium), sometimes referred to as "dye", which enables radiologists to see specific areas of your body more clearly. The need for this will be determined by the radiologist, based on the information your doctor provides us. The injection is usually performed towards the end of the examination by the Technologist. Some people experience a sensation of coolness while the dye/contrast is being administered; this is normal. Most people do not experience complications. However mild reactions may occur including nausea, headache, vomiting, dizziness, rash or hives. These reactions will pass without treatment or respond quickly to medication. Rarely, more severe reactions can occur including drop in blood pressure and irregular heartbeat. In some cases, you may be asked to refrain from eating for a period of time prior to the test.

## What can I expect during the MRI scan?

The scan is performed by a radiologic Technologist. Upon arriving in the MRI Department, you will be greeted by a receptionist and asked a series of questions. Once in the scan room, you will be asked to lie on a padded table. During the scan, it is important to hold very still, as movement will cause blurring of the pictures. Throughout the entire examination, you will be able to speak to the technologist via an intercom. Technologists will talk with you frequently during your scan, explaining the procedure each step of the way. When the scanner is operating, you will hear a loud thumping noise and may feel a slight vibration. This is normal.

## How long will the MRI scan take?

Each MRI scan is different. However, most scans take between 30 and 60 minutes (per exam).

## What will happen following my MRI scan?

Immediately following the scan, you may resume normal activities, diet and medications.

## How do I find out the results of my MRI scan?

Your MRI scan will be reviewed by a Radiologist. The Radiologist will send a report to your physician, who will give you the results of the scan.

## Important Considerations

You should inform the receptionist if you are pregnant.

It is very important to inform the staff prior to the scan if you have metal implants or objects (the technicians will decide if you can be safely scanned): Aneurysm clips, artificial heart valve, bullets, cardiac pacemaker, eye orbital prosthesis, hip or knee prosthesis, insulin pump implant, intra-cranial bypass graft clips, middle or inner ear prosthesis, shrapnel, sternal wire sutures, tantalum mesh, body piercing, dentures, permanent make-up. Upon arrival, an MRI safety questionnaire will be reviewed with you.

Additionally, if you have ever been a metal worker, it is important that you inform the doctor of this, as you may be required to have your eyes x-rayed before having the scan.

This information will be asked on the day of the scan, and you will be asked to sign a form stating you are aware of the need to provide this information prior to the scan for your own safety.

### Unique Services Available at Advanced Imaging

<i>Fetal MRI</i>	<i>Cartilage Sensitive Orthopedic MRI</i>
<i>MR Enterography</i>	<i>Cardiac MR for congenital heart disease, masses and myocardial viability</i>
<i>MR Defacography</i>	<i>MR Aorta</i>
<i>Dynamic Pelvic Floor Imaging</i>	<i>MR Pulmonary Vein Anatomy</i>
<i>MR Urogram</i>	<i>Tractography</i>
<i>MR Prostate</i>	<i>MR Spectroscopy</i>
<i>MRI of Joint Replacements</i>	<i>MR Perfusion/Diffusion</i>

