



Is Lung Cancer Screening Right for You?

The National Lung Screening Trial (NLST) demonstrated a 20% decrease in lung cancer related mortality and a 7% decrease in overall mortality in current and former smokers age 55-74 screened with CT when compared to smokers who did not have CT screening. The Centers for Medicare and Medicaid Services (CMS) cover lung cancer screening for patients age 55-77 who meet these criteria. Other people at increased risk for lung cancer, such as current and former smokers in all age groups, people with strong family history of lung cancer, and people with asbestos exposure, may also benefit.

Contact

For an appointment, please call 914-493-2500.

Address:
Advanced Imaging at WMC
19 Bradhurst Avenue Suite 1000N,
Hawthorne, NY 10532

Key Personnel:

Anna Rozenshtein, MD, MPH, FACR
Director, Thoracic and Cardiac Imaging

Robert Shapiro, MD
Medical Director at Advanced Imaging

Catherine Roimisher, NP
Lung Cancer Screening Navigator

Kassem Harris, MD, FCCP
Director of Interventional Pulmonology

Tracey L. Weigel, MD, FACS, FACCP
Chief, Thoracic Surgery

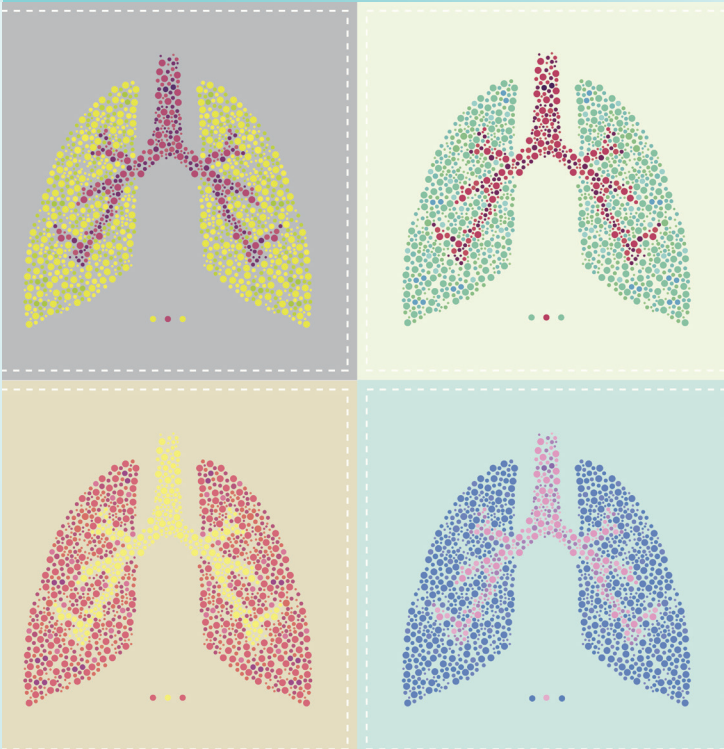
Michael Fanucchi, MD, MPH
Regional Director, Oncology and Infusion Services

Nagwa Saleh, MD
Radiation Oncologist

Smoking Cessation Services:

Catherine Roimisher, NP
914-246-6600, option 4

ADVANCED IMAGING AT WMC



Low Dose CT Lung Cancer Screening

Lung cancer screening with computed tomography (CT) to help detect lung cancer at an early stage.



Westchester Medical Center

Westchester Medical Center Health Network



Westchester Medical Center

Westchester Medical Center Health Network



About the Westchester Medical Center
**Low Dose CT Lung
Cancer Screening**



**Westchester Medical Center offers
Early Lung Cancer Detection to
High Risk Patients.**

Lung cancer screening with computed tomography (CT) helps detect lung cancer at an early stage when it can be removed completely and cured. The Westchester Medical Center (WMC) lung cancer screening program offers high quality imaging with state-of-the-art CT equipment. Our program includes a subspecialty-trained, board-certified thoracic radiologist, pulmonologists, oncologists, radiation oncologist and thoracic surgeons based at WMC.

**Frequently
Asked Questions:**

Will I be exposed to radiation?

Yes, CT requires the use of x-rays to generate images. Low- dose screening CT at WMC uses approximately 20% of the radiation dose used for an average diagnostic chest CT.

**Can I get a lung cancer screening CT
without a provider's order?**

No, New York State law requires a provider referral for CT lung cancer screening. If you do not have a provider, our CT lung cancer screening program navigator will be able to help.

How will I be informed of the results?

Your screening CT will be interpreted by experienced, board-certified radiologists. A letter with results will be mailed to you. The full report will be sent to your provider, who will then discuss the result with you.

**If an abnormality is found,
does it mean I have cancer?**

Not necessarily. Small nodules and other abnormalities are found in about 1 in 5 screening CT scans, but most of these turn out to be benign — not cancer. Additional tests, most commonly follow-up scans, may be necessary to separate these incidental nodules from early cancers.

**What makes the lung cancer
screening program at WMC better
than others in the area?**

The WMC Lung Cancer Screening Program offers a dedicated nurse practitioner who will help you walk through the entire process of screening; a subspecialty-trained, board-certified thoracic radiologist, pulmonologists, oncologists, radiation oncologists, thoracic surgeons, and state-of-the-art CT equipment.